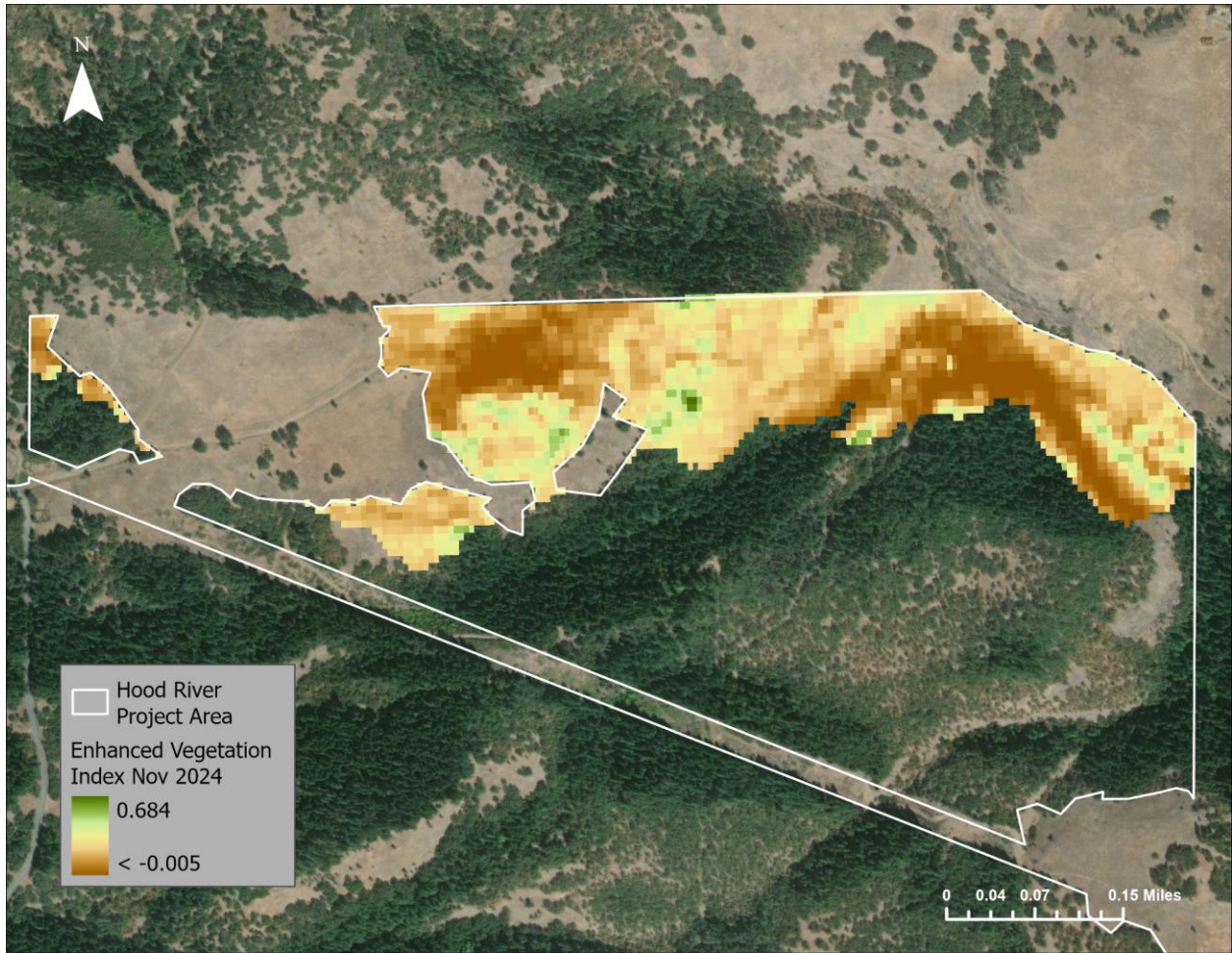
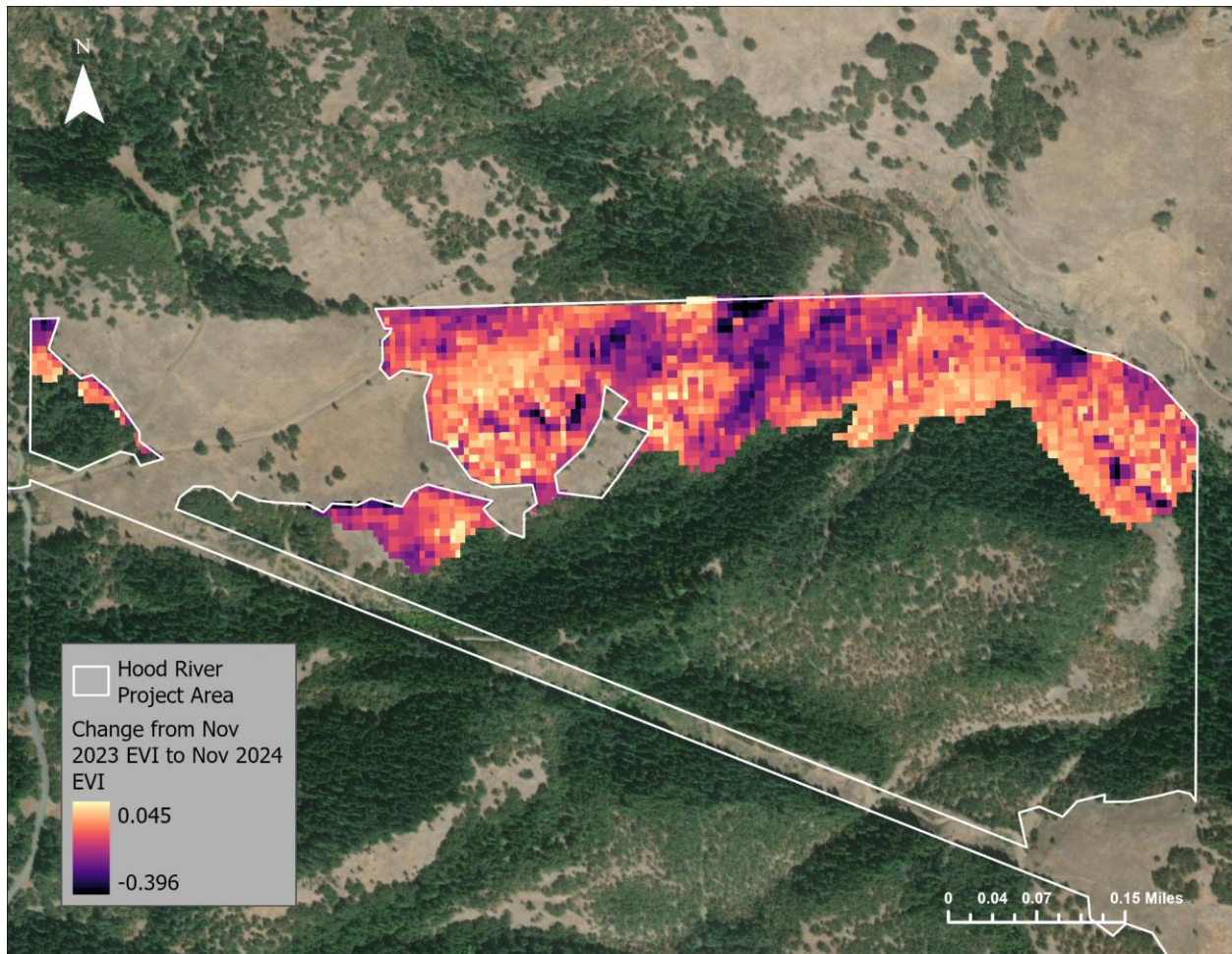


**Figure 1:** Enhanced Vegetation Index (EVI) derived from Sentinel-2 imagery captured on 11/23/2023. Values closer to 0.684 represent healthy vegetation. Values closer to -0.005 represent sparse vegetation and bare soil.



**Figure 2:** Enhanced Vegetation Index (EVI) derived from Sentinel-2 imagery captured on 11/27/2024. Values closer to 0.684 represent healthy vegetation. Values closer to -0.005 represent sparse vegetation and bare soil.





**Figure 3:** This figure shows the difference between the EVI images from November 2023 and November 2024. The *white border* represents the Hood River County Tree Farm project area. The *heat map* shows the difference between the EVI images from November 2023 and November 2024. *Dark purple values* (closer to -0.396) indicate a decrease in EVI signal. *Light yellow values* (closer to 0.045) indicate little to no change in EVI signal.